

ITU Faculty of Architecture, Interior Architecture Department

living with dignity

2025–2026 Spring Semester

Interior Arc. Design Fundamentals Studio

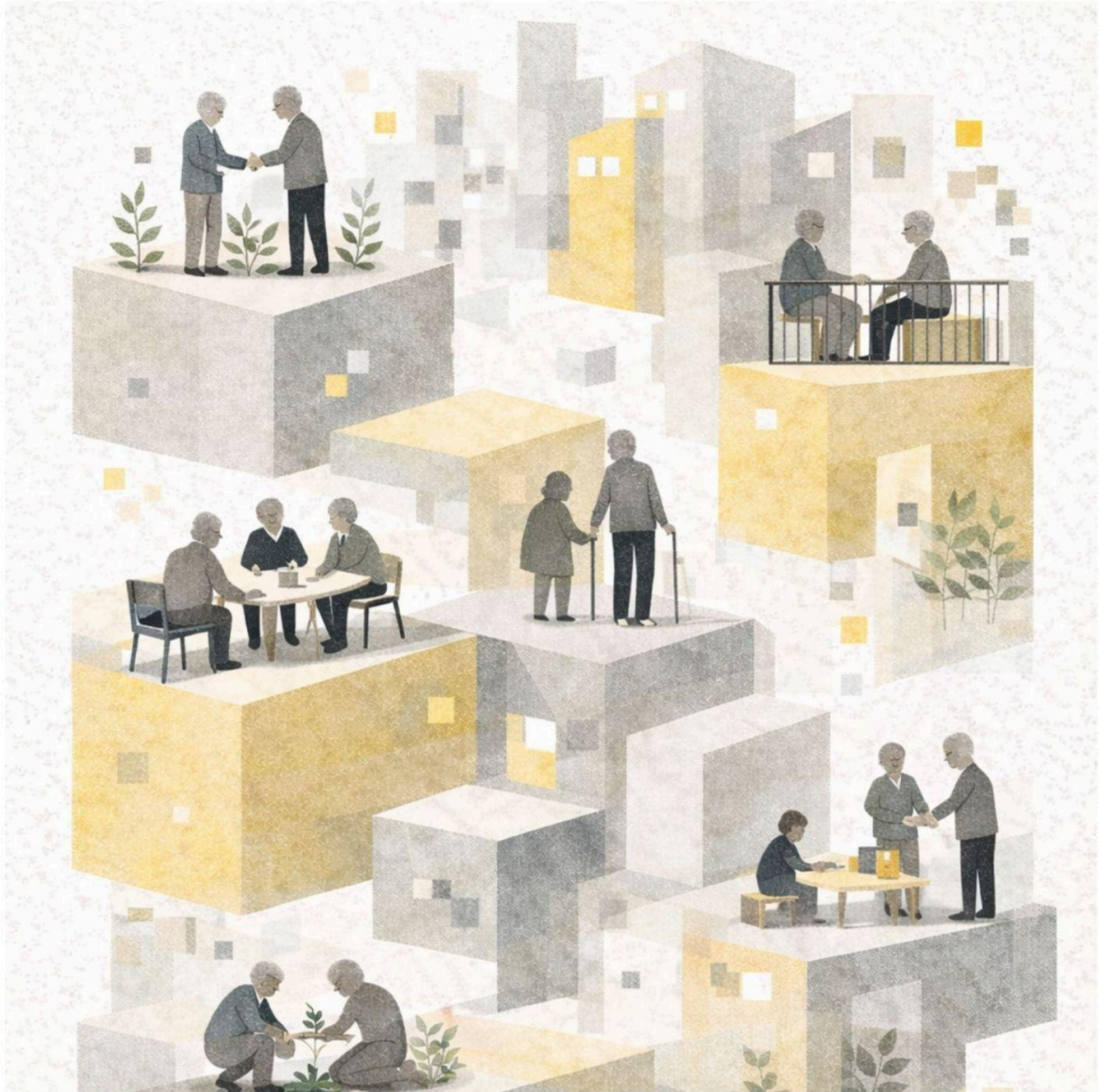
Interior Arc. Design Studio I

an urban warehouse
for the elderly?

assoc. prof. dr. ahmet erdem tozođlu

res. assist. firat küçükersen

Enabling elderly individuals to lead collaborative, active and dignified lives is an important social and spatial design issue for today's societies. This project aims to examine how elderly individuals can be included in active living within Turkey's economic, social, and cultural context.



ICM 209E Interior Arc. Design Fundamentals Studio

ICM 246E Interior Arc. Design Studio I

ITU Faculty of Architecture, Interior Architecture Department
2025-2026 Spring Semester_Monday&Thursday

Living with Dignity: An Urban Warehouse for the Elderly?

assoc. prof. dr. ahmet erdem tozođlu
tozoglu@itu.edu.tr (office hours Mondays 12:30-13:30, Thursdays, 12:30-13:30 upon prior notice)
res. assist. firat kucukersen
kucukersenfirat@itu.edu.tr

project brief & objectives

Enabling elderly individuals to lead collaborative, active and dignified lives is an important social and spatial design issue for today's societies. This project aims to examine how elderly individuals can be included in active living within Turkey's economic, social and cultural context.

How can an environment be designed that allows older people to socialise with others who share similar experiences, with their friends and families, while also maintaining their private lives in line with their own habits, life practices and perspectives? How can a balance between the private and the communal be established for older individuals? How can practices of mutual support, solidarity and sharing be spatially supported?

Older individuals maintain their lives in different ways due to social, cultural, and economic reasons. These differences show that the experience of ageing cannot be approached through a single model. The project aims to produce alternative living scenarios that allow older individuals to live both independently and together, while taking this diversity into account.

In this context, the project focuses on designing a new living space for older individuals, centring on themes such as:

- shared and individual living spaces,
- spaces for mutual support and solidarity,
- programmes that encourage active participation,
- intergenerational interaction and sharing.

context and rationale

In recent years, deepening economic instability in Turkey has disproportionately affected the retired elderly population. Fixed incomes eroded by inflation, rising housing costs, and inadequate social support mechanisms have forced many elderly individuals into precarious living conditions, including homelessness or unsafe temporary accommodation. Simultaneously, a growing number of older adults are compelled to seek informal, part-time, or short-term employment to sustain daily life. These conditions not only undermine physical well-being but also erode social visibility, autonomy, and dignity.

This studio takes these realities as its point of departure and asks students to engage interior space as tools for social repair, inclusion, and care.

project aim and site

This project aims to transform Baruthane in Bakirkoy into a collective living environment for elderly individuals experiencing housing insecurity. Rather than proposing a conventional shelter or institutional facility, students are

expected to design a hybrid spatial model that combines dwelling, socialization, and production—supporting everyday life while fostering dignity, agency, and community. There will be two instructors in this studio, running the same design agenda and sharing events, but with alternative design approaches.

schedule

The Schedule prevails unless the instructors will inform otherwise. In case of alteration, it will be announced both verbally (during studio hours) and via Ninova

WEEK	DATE	STUDIO	NOTES
1	9 February	Introduction to project topic	Design workouts First reading assignment is given.
	12 February	Design workout: Human dimensions of dwelling.	
2	16 February	First reading discussion is due.	
	19 February	Design workout: Human dimensions of social space.	
3	23 February	Second reading assignment is due.	Third reading assignment is given
	26 February	Site visit: Baruthane in Bakirkoy	
4	2 March	Third reading assignment is due	HW4. Site & space analysis. A poetic and phenomenological reading of space (group assignment).
	5 March	Student presentations.	Conceptual design improves.
5	9 March	Conceptual design	Conceptual design improves.
	12 March	Conceptual design: design iterations	Proposals for spatial zoning and spatial configurations.
Spring break			
6	23 March	Improving spatial logic through several sketches, charts and diagrams	HW. Design refinements
	26 March	Working on single living unit alternatives (plan and section).	HW. Working on alternative plan / section configurations.
7	30 March	Working on single living unit alternatives (plan and section).	Design improvements.

	2 April	SW. Designing public spaces / interfaces	HW. Revise public spaces / interfaces
8	6 April	Sketch exam Departmental design event	Design brief will be provided
	9 April	Designing public spaces / interfaces	HW. Revise public spaces / interfaces
9	13 April	The atmospheres. Light and color	Introduction to atmospheric drawings
	16 April	The atmospheres. Light and color.	HW. revisions
10	20 April	The atmospheres. Light and color.	HW. revisions
	23 April	National day / no studio	
11	27 April	Pin-up jury evaluation	
	30 April	Materials and design detailing:	Model making, detailing, design research.
12	4 May	Materials and design detailing:	Material board and moodboard design
	7 May	Materials and design detailing	Introduction to 1:20 and 1:10 drawings
13	11 May	Materials and design detailing: built-in units	Introduction to 1:20 and 1:10 drawings
	14 May	Materials and design detailing: built-in units	Introduction to 1:20 and 1:10 drawings
14	18 May	Pin-up jury evaluation	Introduction to 1:20 and 1:10 drawings
	21 May	Poster design	Poster design
Final Submission		Project Submission	End of semester Submission date will be announced.

attendance & grading

%80 attendance to the studio is required. Those who are absent for more than three weeks during the semester will be graded with "VF." Student reports are considered within the scope of 20% attendance. Students ought to present in all submissions and juries. In case of an emergency during final submissions, at least three days of hospital health report is required.

Students must complete at least 80% of the required assignments and submissions on time in order to pass the class.

Students are graded by several submissions as seen in the table below. Attendance, active participation and the studio process will also be considered in the evaluation.

Evaluation	%
Preliminary Studies	10%
First Pin-up jury	15%
Second pin-up jury	15%
Sketch exam	5%
Design studies	15%
Final Submission	%40
Total	%100